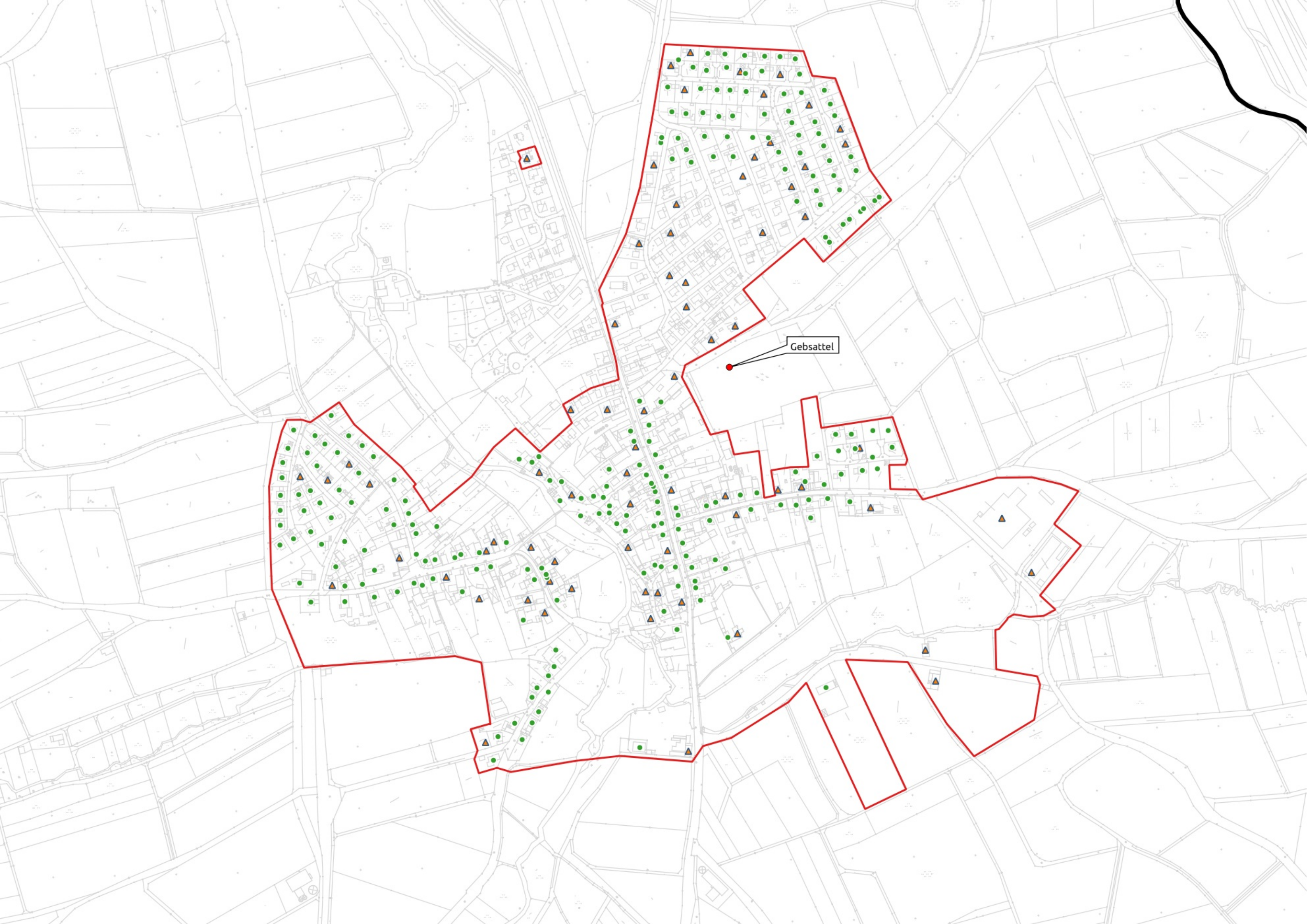


Planungsbüro Stephan Schröder UG
(haftungsbeschränkt)

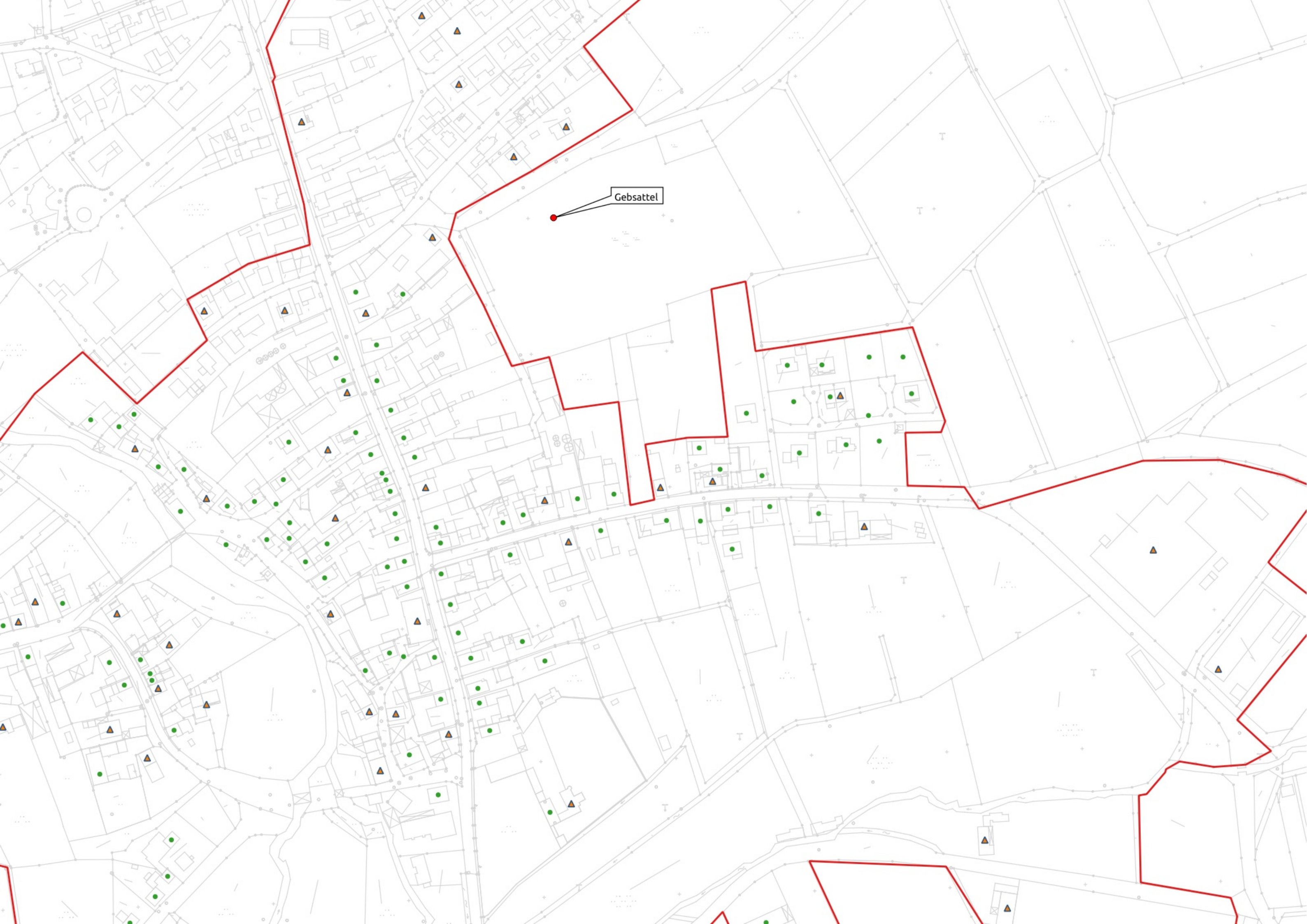


www.breitbandplanung.de

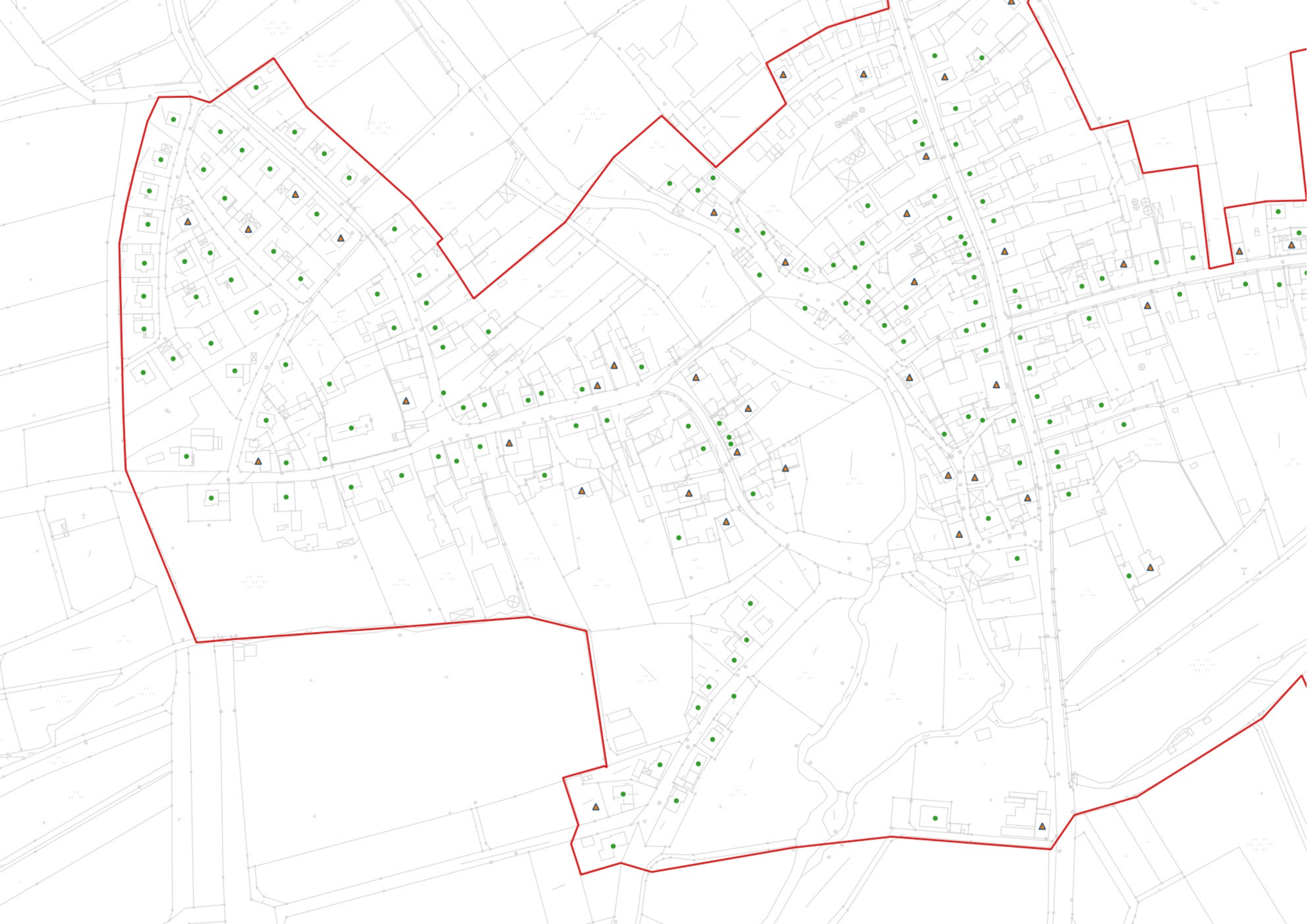
- private Anschlußpunkte, geforderte Bandbreite mindestens 200 MBit/s symmetrisch
- ▲ gewerbliche Anschlußpunkte, geforderte Bandbreite mindestens 1 GB/s symmetrisch
- vorläufiges Erschließungsgebiet Gigabit 1
- ▭ Gemeindegrenze

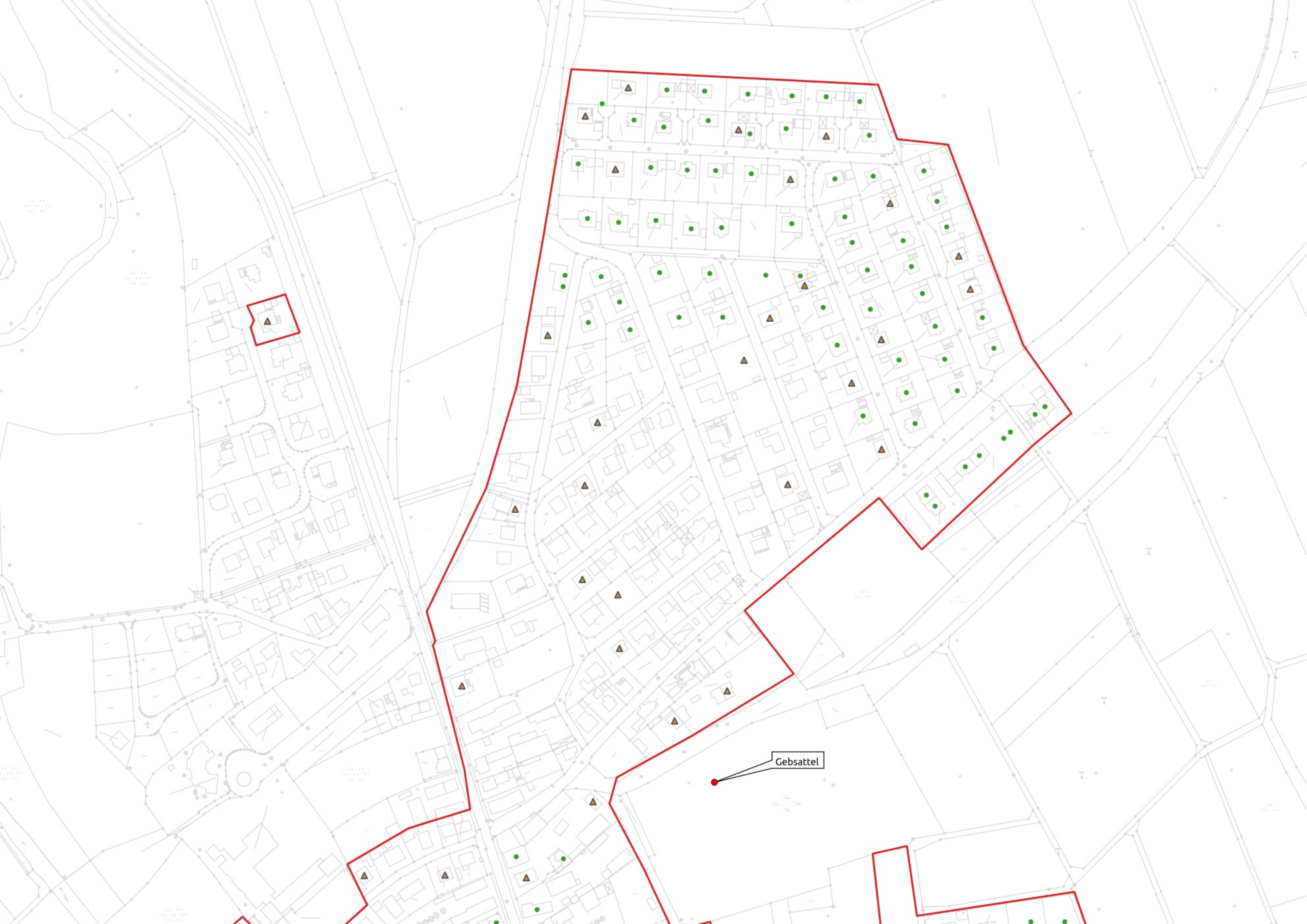


Gebstattel

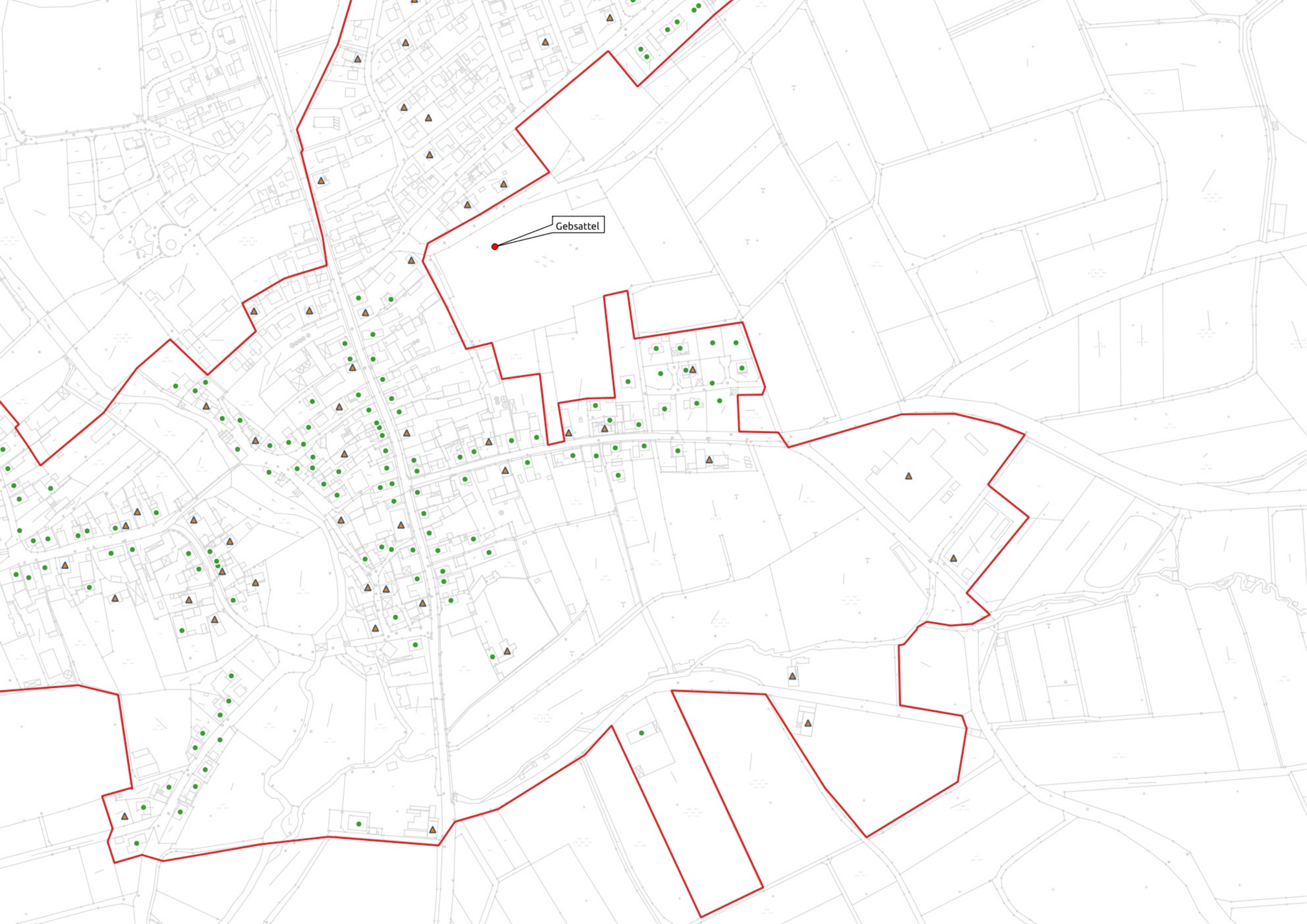


Gebstättel

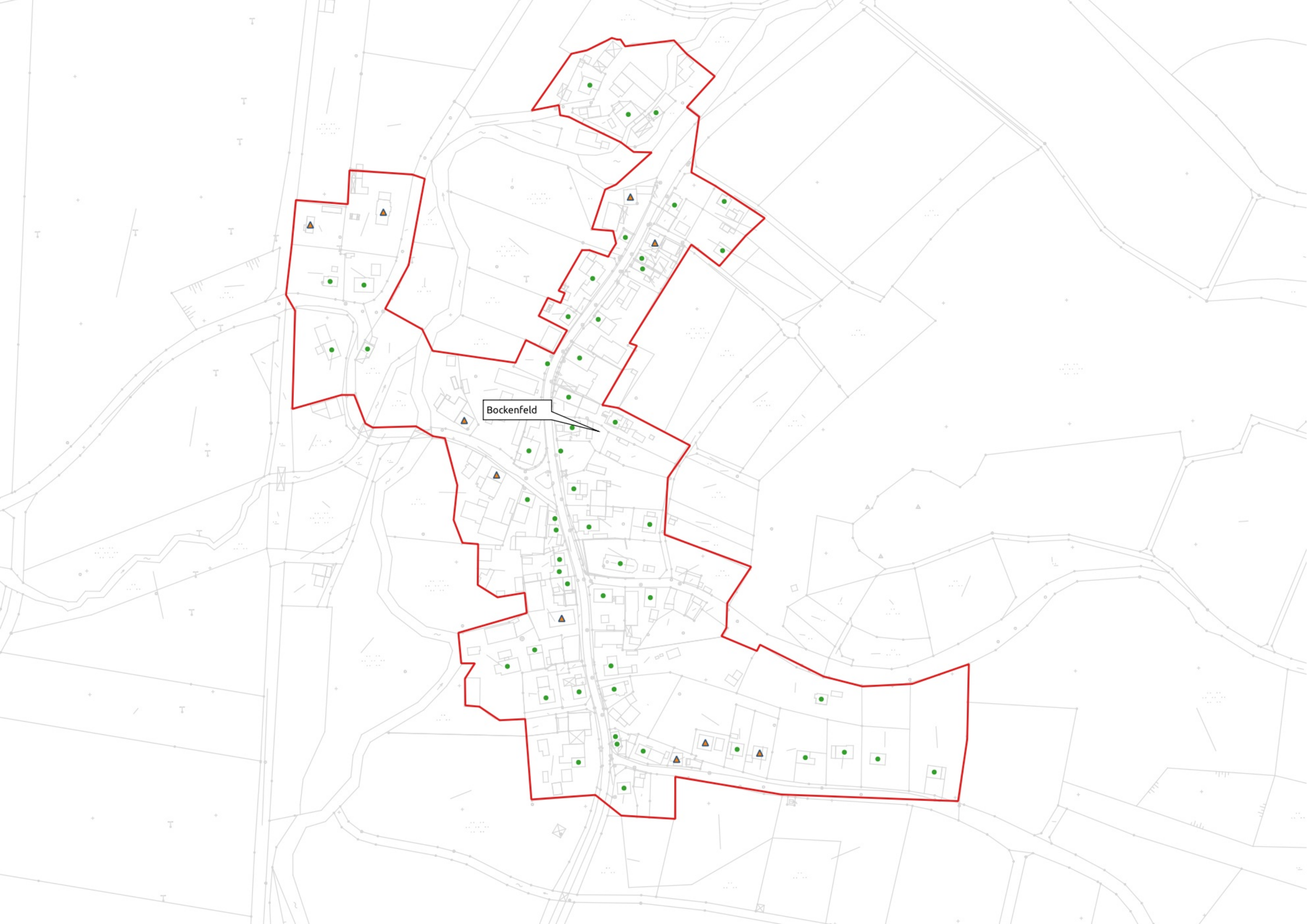




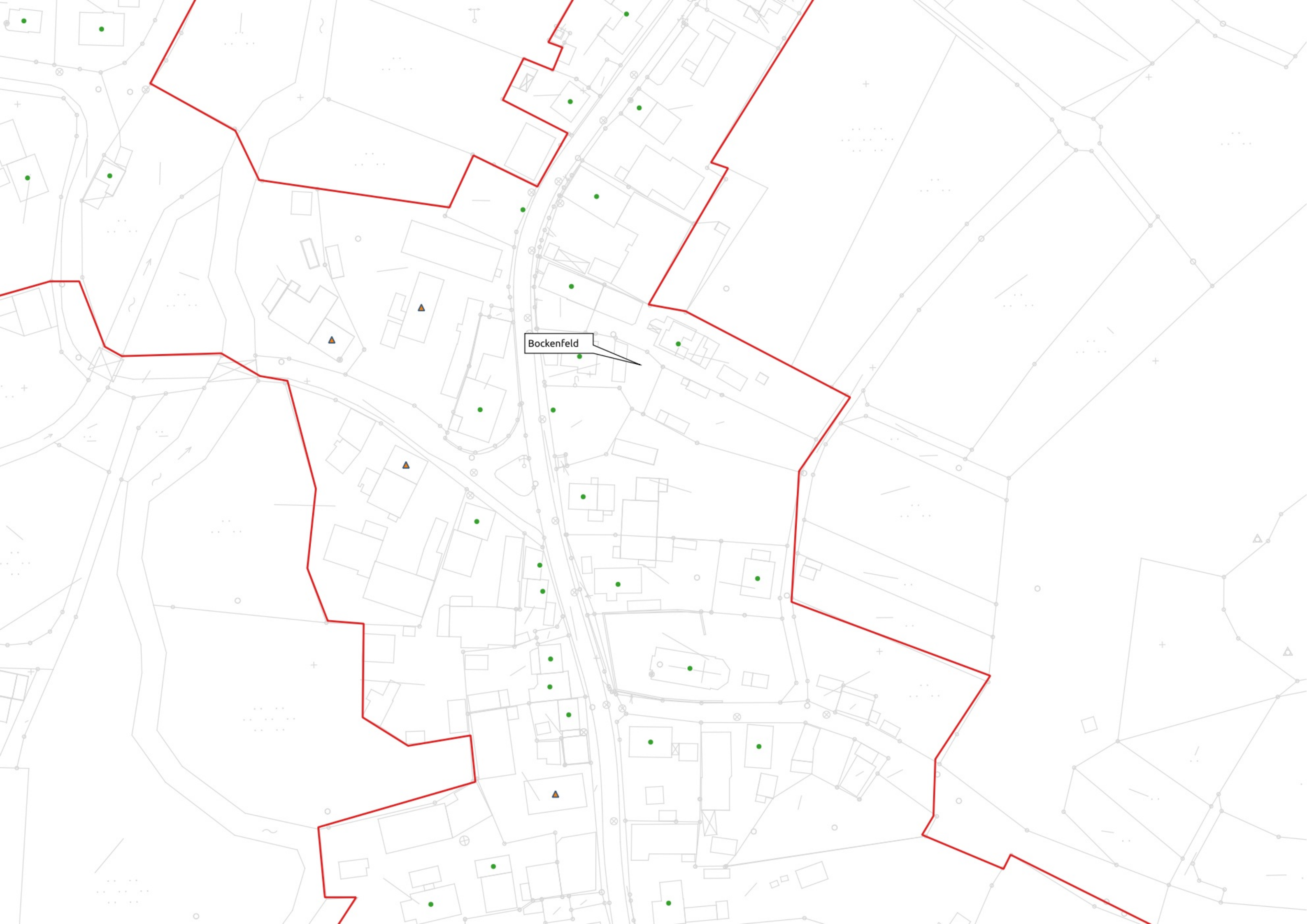
Gebstättel



Gepsattel



Bockenfeld



Bockenfeld